

# An Introduction to your membership in the **Sustainable Libraries Initiative**

Presented by: **Rebekkah** Smith Aldrich, SLI Co-Founder & Advisory Board President

**Matthew** Bollerman, SLI Co-Founder & Advisory Board Vice President



**Sustainable  
Libraries  
Initiative**



**MARYLAND  
LIBRARY  
ASSOCIATION**



**Vermont  
Library  
Association**



MARYLAND  
LIBRARY  
ASSOCIATION



Vermont  
Library  
Association



ARSL  
THE ASSOCIATION FOR  
RURAL & SMALL  
LIBRARIES

ASSOCIATION  
OF RESEARCH  
LIBRARIES



Maine Library  
Association



IOWA  
LIBRARY  
ASSOCIATION



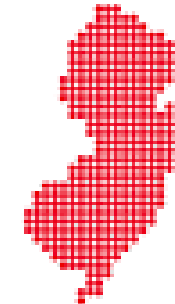
NEW YORK LIBRARY ASSOCIATION  
*The Voice of the Library Community*



VIRGINIA LIBRARY  
ASSOCIATION



Massachusetts  
Library Association



NEW JERSEY  
**NJLA**  
LIBRARY ASSOCIATION

# A new opportunity...

- Free Sustainable Libraries Initiative membership for all ARSL, MLA, and VLA Members
- Discount on the Sustainable Library Certification Program



**Sustainable  
Libraries  
Initiative**



**MARYLAND  
LIBRARY  
ASSOCIATION**



**Vermont  
Library  
Association**

# Sustainable Libraries Initiative

---

Launched in 2015 as a community of practice for library leaders interested in addressing issues related to **climate change, community resilience and securing a vital, vibrant, and visible place** in the community/on campuses/in schools for libraries.



**Sustainable**  
**Libraries**  
**Initiative**





Image Source: National Centers for Environmental Information, NOAA



**The Global Risks  
Report 2025**  
20th Edition  
INSIGHT REPORT



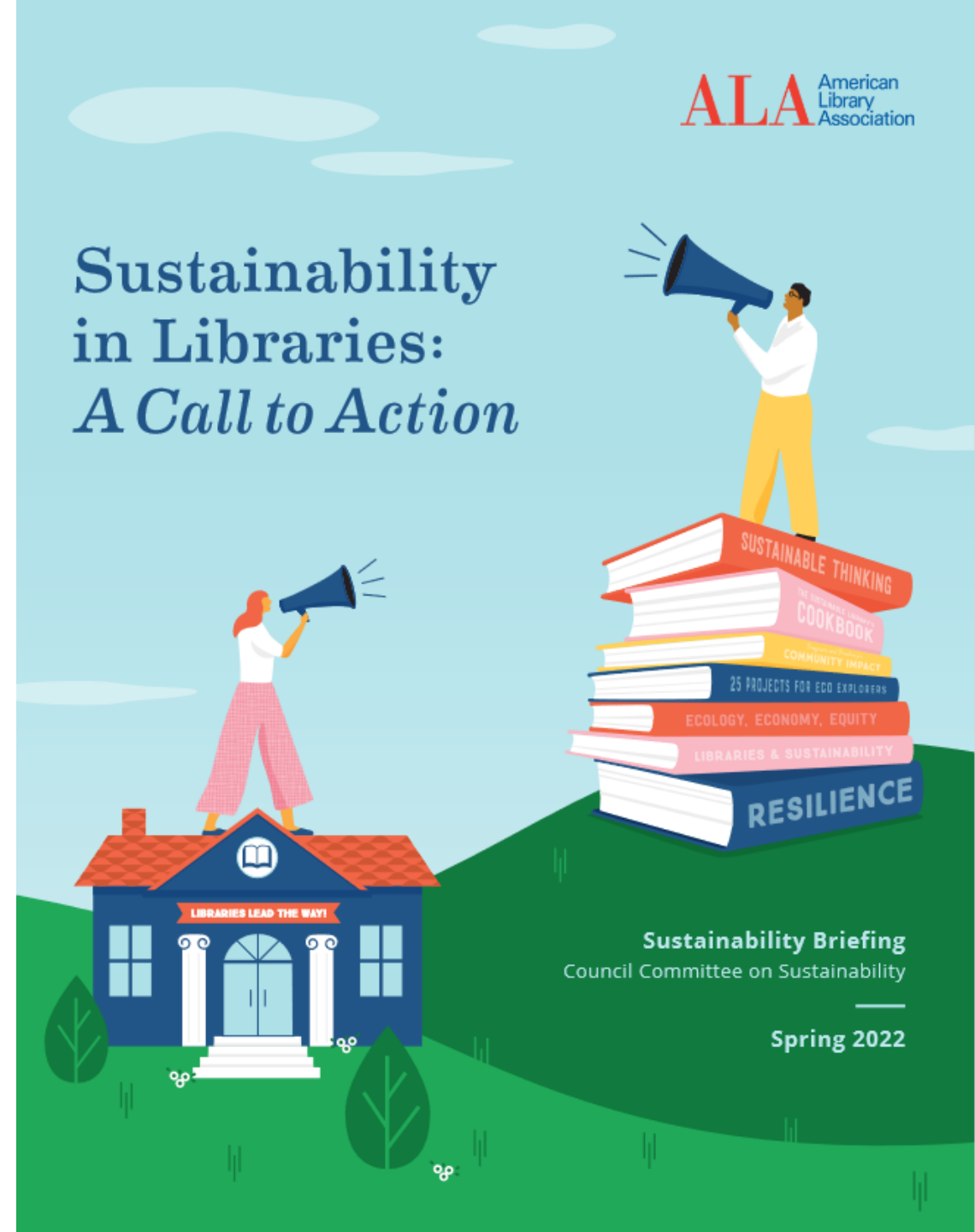
## Overarching Themes:

- Declining Optimism
- Deepening geopolitical and geoeconomic tensions
- Growing Sense of Societal Fragmentation

## Top Concerns:

- 2-year horizon:
  - **#1: Misinformation and disinformation**
  - **#2: Extreme weather**
- 10-year horizon:
  - **#1: Extreme weather**
  - **#2: Biodiversity loss and ecosystem collapse**

“**Climate change** is the single greatest threat to global health, a “**code red for humanity**,” and is this generation’s **grandest challenge**.”





**Sustainability = Core Value**







**EVERY  
JOB  
IS A  
CLIMATE  
JOB**

**PROJECT  
DRAWDOWN.**

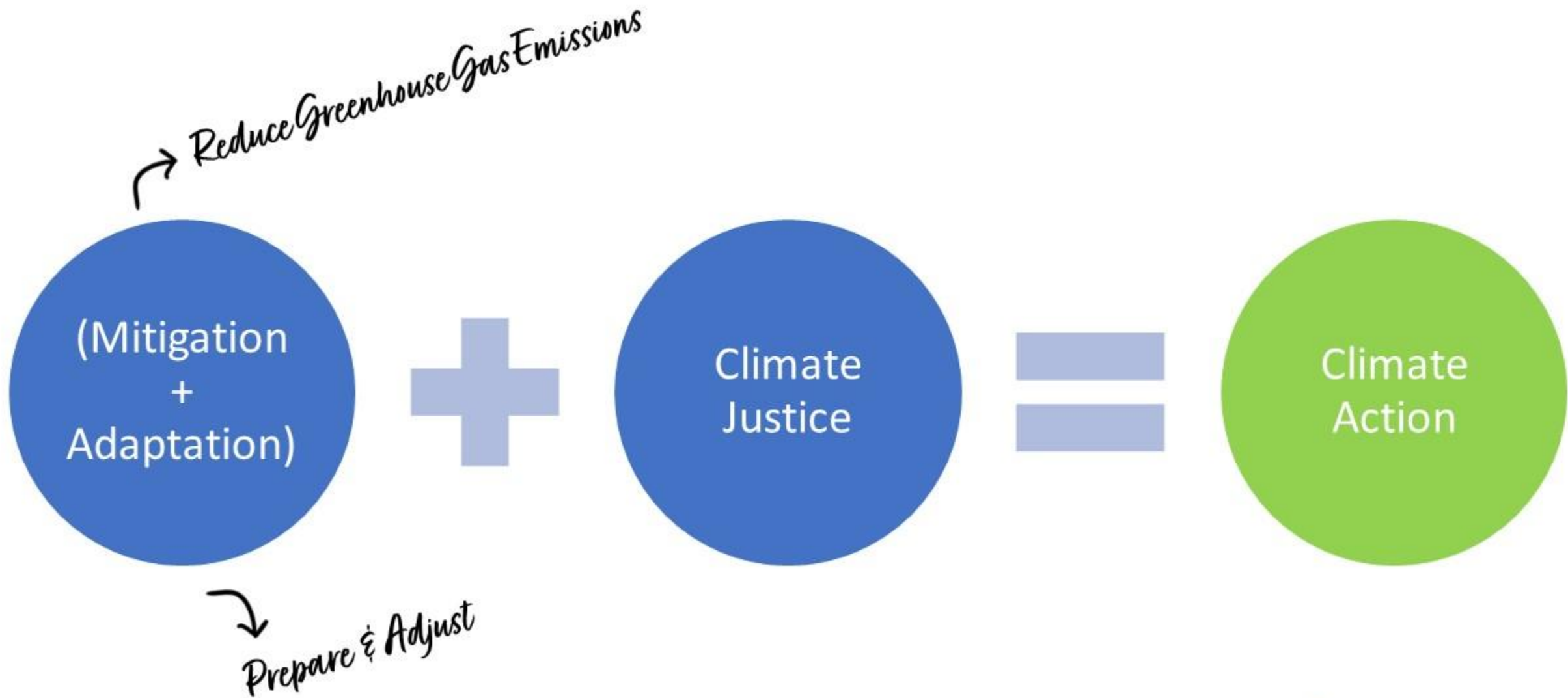


**Sustainable  
Libraries  
Initiative**

→ Reduce Greenhouse Gas Emissions

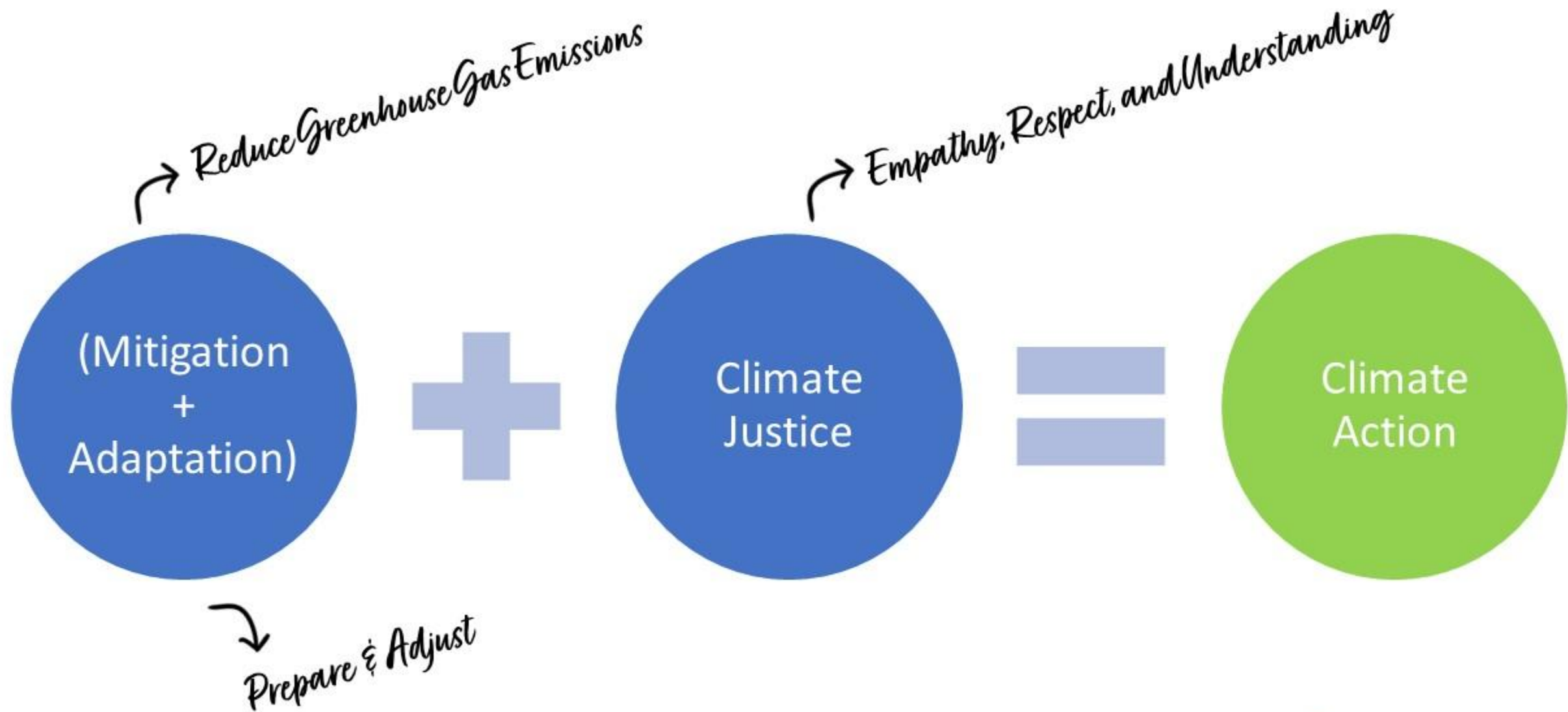


**Sustainable  
Libraries  
Initiative**



**Sustainable  
Libraries  
Initiative**





**Sustainable  
Libraries  
Initiative**

# National Climate Action Strategy for Libraries

## 1 | Climate Change Mitigation

Libraries align greenhouse gas emission reduction goals with those that international climate scientists and policy makers have indicated are necessary to prevent catastrophic cascading effects. This strategy recommends a goal for all libraries to reduce their institution's greenhouse gas emissions by 43%, from 2015 levels, by 2030 and to achieve net-zero greenhouse gas emissions by 2050.<sup>1</sup>

## 2 | Climate Change Adaptation & Contributions Community Resilience

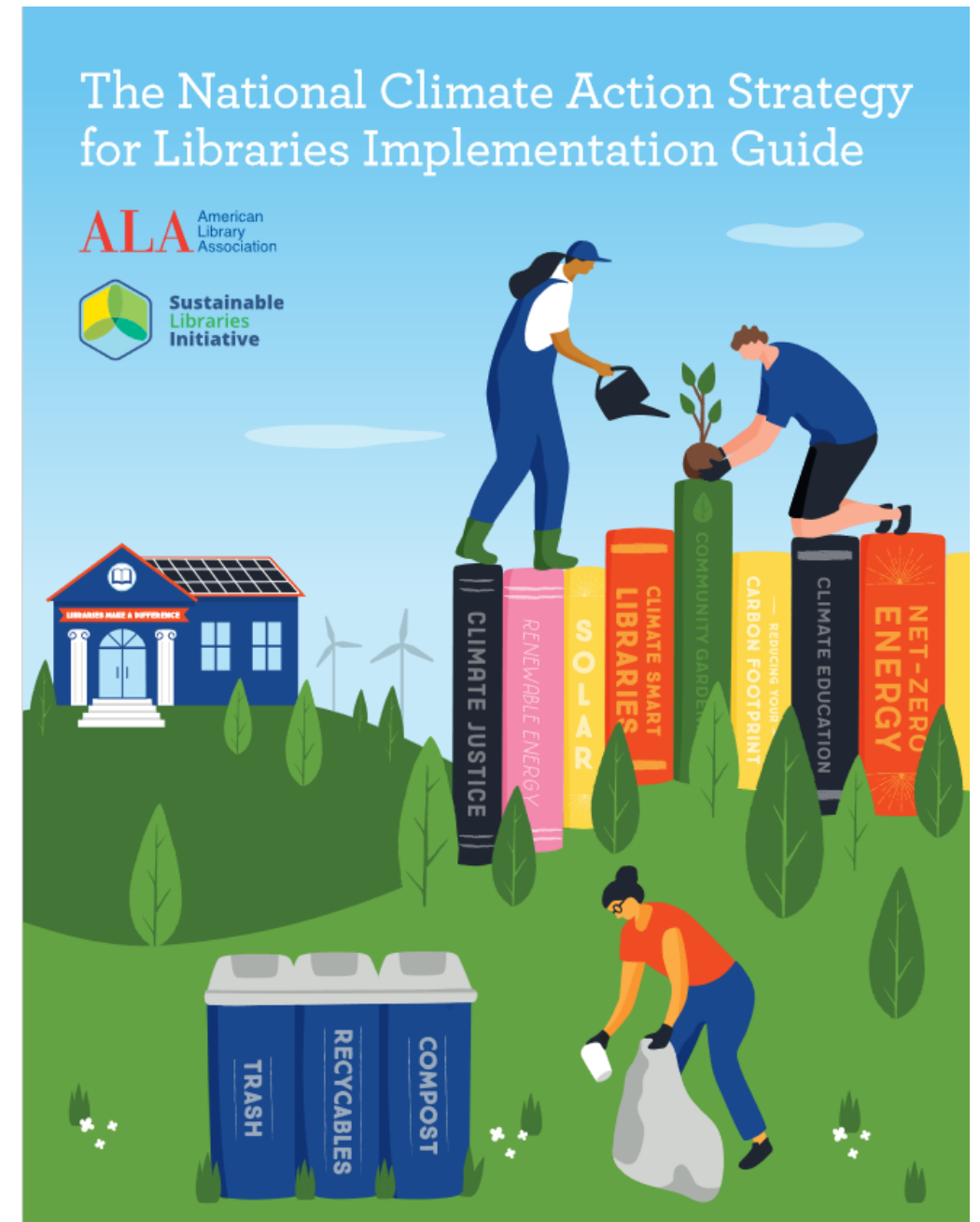
Libraries adopt both internal disaster preparedness plans and strategic goals that speak to the most likely climate hazards facing their area to contribute to their community's resilience.

## 3 | Climate Justice Work

Libraries harness the transformative power of education for climate justice and develop relationships with local community organizations working on climate justice to embed a deeper awareness of the intersection of human and civil rights with climate stewardship than is presently found.<sup>2</sup>

<sup>1</sup> Paris Agreement, United Nations, [https://unfccc.int/sites/default/files/english\\_paris\\_agreement.pdf](https://unfccc.int/sites/default/files/english_paris_agreement.pdf)

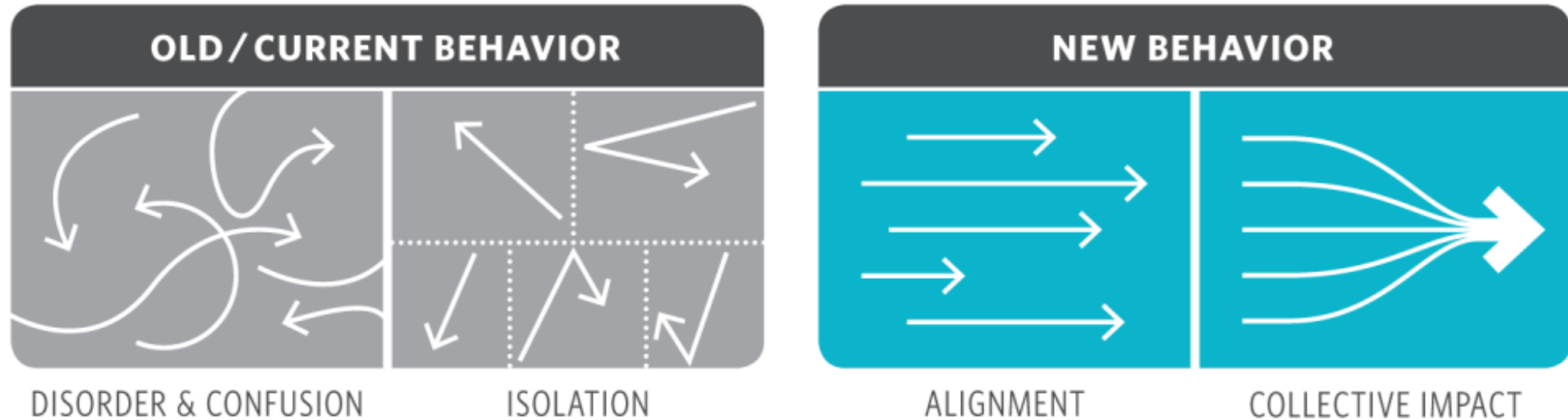
<sup>2</sup> Principles of Climate Justice, Mary Robinson Foundation, <https://www.mrfcj.org/principles-of-climate-justice/harness-the-transformative-power-of-education-for-climate-stewardship/>





# CENTER FOR THE FUTURE OF LIBRARIES

ALA American Library Association



Graphic: AllHandsRaised.org

# Sustainable Libraries

- ✓ **Strong & Authentic Institutions** that live their values out loud
- ✓ Catalyst for **Social Cohesion & Civic Participation** in Communities
- ✓ Working on **Climate Mitigation** (reducing Greenhouse Gas Emissions (GhG))
- ✓ Active Participants in **Climate Adaptation** (strengthening community resilience)



“You've got to think about **big things** while you're doing **small things**, so that all the small things **go in the right direction.**”

-Alvin Toffler , futurist



### Triple Bottom Line Definition:

- Environmentally Sound
- Socially Equitable
- Economically Feasible

# Growing Community of Practice

225+ libraries across the country are enrolled in the Sustainable Library Certification Program

- Access to the final presentations of certified libraries
- Sample policies
- Vendor list populated by libraries in the program
- Practical advice at monthly meet-ups
- Stories from the field in our monthly newsletter



**Sustainable  
Libraries  
Initiative**

# Benefits

Available upon claiming your free 12-month SLI Membership



**Sustainable  
Libraries  
Initiative**



**MARYLAND  
LIBRARY  
ASSOCIATION**



**Vermont  
Library  
Association**



# Policy Examples

## A.5: Sustainability Policy

## A.6: Purchasing Policy

## D.3: Library Travel Policy

## D.5: No-Idling Policy

## H.1: Partnership Policy

## I.1: Commitment to Equity, Diversity and Inclusion

## J.1: Commitment to Community Resiliency

## L.1: Collection Development Policy

### A.5: Sustainability Policy

Your library's Sustainability Policy will set the tone for decision making at all levels of your institution. Declaring that you will factor triple bottom line sustainability into your institution's decision making process will let all library stakeholders know that these considerations are fundamental to operations.

- [Comsewogue Public Library Environmental Sustainability Policy](#)
- [Kalamazoo Public Library Environmental Stewardship and Sustainability Policy](#)
- [Lindenhurst Memorial Library Sustainability Policy](#)
- [Mid-Hudson Library System Sustainability Policy](#)
- [Patchogue-Medford Library Sustainability Policy](#)
- [Plainedge Public Library Sustainability Policy](#)

### A.6: Purchasing Policy

Products purchased for use in the library should factor in the environmental costs. These considerations could include the packaging, ingredients, and whether the item can be found from a local retailer or supplier. A purchasing policy should explicitly prioritize the best choice for environmental and social responsibility.

- [Palisades Free Library Environmental Policy](#)
- [Saratoga Springs Public Library Environmental Policy](#)
- [Palos Verdes Library District Sustainable Purchasing Policy](#)
- [Illinois Library Guide to Green Libraries: Purchasing](#)



**Sustainable  
Libraries  
Initiative**

# Live & On Demand Training

- Library for Health and Wellbeing: A Strategic Framework
- Climate Adaptation for Library Facilities
- Sustainability Challenge: Month-by-Month
- Repair Cafes
- Workplace Wellness
- Beyond Lightbulbs and Solar Panels: Triple Bottom Line Sustainability
- Diversity, Equity, and Inclusion in a Sustainable Library
- Community Gardening
- Measuring Sustainability in Libraries



**Sustainable  
Libraries  
Initiative**

# Custom CO<sub>2</sub> Calculator



**Sustainable  
Libraries  
Initiative**

[My dashboard](#)

[Log out](#)

[HOME](#)

[ABOUT US](#)

[PARTICIPATE](#)

[MEMBERS](#)

[EVENTS](#)

[NEWS](#)

[RESOURCES](#)

[CONTACT US](#)

[DONATE](#)

[View](#)

[History](#)

[Revisions](#)

Input Your Use	Emission Type	CO2 Emissions
<b>Electricity</b>		
<input type="text" value="0"/> <small>KWh</small>	Electricity	0.000 metric tons
<b>Building Fuel</b>		
<input type="text" value="0"/> <small>Gallons</small>	Fuel Oil	0.000 metric tons
<input type="text" value="0"/> <small>Therms</small>	Natural Gas	0.000 metric tons
<input type="text" value="0"/> <small>Gallons</small>	LP Gas	0.000 metric tons
<b>Fleet Fuel</b>		
<input type="text" value="0"/> <small>Gallons</small>	Gasoline	0.000 metric tons
<input type="text" value="0"/> <small>Gallons</small>	Diesel	0.000 metric tons
<b>Business Travel</b>		
<input type="text" value="0"/> <small>Miles</small>	Vehicle	0.000 metric tons
<input type="text" value="0"/> <small>Miles</small>	Bus	0.000 metric tons
<input type="text" value="0"/> <small>Miles</small>	Train	0.000 metric tons

# Program Idea Bank

## Bee Hotels

Bees may be some of the hardest workers, but so are Lindenhurst's Summer Camps Campers!

**Audience:** Teens

**Program Type:** Educational

[More Details](#)

## Local Snacks, Global Issues

Ever heard that "April showers bring May flowers?" We're prepping for May flowers during these April showers. Join us inside for a little while longer to enjoy some local snacks and global films to inspire and activate your year. Together we can change the world.

**Audience:** Adults

**Program Type:** Educational

[More Details](#)

## Big Tiny Art Show

The Big Tiny Art Show provided community groups and members of all ages as well as staff to create small paintings of any type of art of their choice. A community art exhibit was held at the culmination of the program featuring over 700 works from community members, groups, and staff.

**Audience:** Everyone

**Program Type:** Display

[More Details](#)

## DIY Rainbarrels

Maximize the potential of rain water! Harvesting rainwater helps conserve water and protect our waterways from polluted runoff! Learn how to make your own Rainbarrels for your library to harvest rain water to further use throughout your landscape.

**Audience:** Adults

**Program Type:** Educational

[More Details](#)

## Now We're Walkin'! Staff Challenge

Longwood Public Library staff walking challenge to promote health and wellness amongst staff. Complete with 8 different walking activities for staff to engage in including incentives in the form of a raffle.

**Audience:** Adults

**Program Type:** Passive

[More Details](#)

## Clothing Swap

At the Shelter Island Public Library a group of local women have decided to keep clothes out of the landfill by holding monthly clothing swaps under the Library tent. They bring the clothes and the Library provides tables, storage space when possible and access to a bathroom and water.

**Audience:** Everyone

**Program Type:** Passive

[More Details](#)

## No Mow May

Promoting healthy environments for pollinators by allowing grass to grow long. By not mowing a small patch of our lawn for the month of May, the Library is taking a small step towards creating a more abundant and diverse habitat for our pollinators.

**Audience:** Everyone

**Program Type:** Passive

[More Details](#)

## DIY Emergency Kit

Wish you were confident in your ability to thrive in an emergency? Make sure you're not the person searching for that flashlight you were sure you thought you had.

**Audience:** Adults

**Program Type:** Educational

[More Details](#)



# Vendor List



[Log out](#)

DONATE

≡ Filters

© 2004 Blackwell Publishing Ltd

10/10/2016



- 

Lamps and Light Bulbs Browse our website for fluorescent lamp recycling kits to get the sizing you need. If you own a business, you know how important it is to maintain a safe, healthy environment for your employees and your customers. At American Lamp Recycling,

# Climate Action Plan Template



## Climate Action Plan Template

Think about your library and community and all you've learned about climate change through this series. Below, brainstorm ways your library can change or things that could be done that would have a positive impact on the local and global community.

### Part 1: Climate Change Mitigation

- A. Brainstorm ways your library can reduce its carbon footprint:
  - a. Facility
    - i. What would it take to make your facility net zero?
  - b. Operations
  - c. Transportation
  - d. Materials Management
- B. How can the library use its facility as a "living laboratory" to educate visitors about how the library works to reduce its carbon footprint?
- C. What collections, programs, services, and partnerships can the library seek to help accelerate climate change mitigation in the community?

### Part 2: Climate Change Adaptation

- A. What are the climate hazards in your region?
- B. What needs to be done to minimize service interruptions at your library?
  - a. Staff Preparation & Education



# SLI-ALA eCourse: 25 free seats

## Sustainable Librarianship: Core Competencies and Practices

*4-week asynchronous eCourse*

- Gain a strong understanding of the **“triple bottom line” definition** of sustainability as adopted by the American Library Association as a Core Value of Librarianship.
- Have the ability to accurately describe **operational decisions, services, programs, and partnerships** their library is already undertaking that better position their institutions as sustainability leaders.
- Make operational decisions as well as **design new services, programs, and partnerships** to ensure their institutions are relevant and responsive in the face of the impacts of climate change using the **“sustainable thinking” model**.
- Understand the importance of **equity, diversity, and inclusion in the context of climate justice**.



# Climate Action Lab

- Identify your region's climate hazards
- Climate Resilience Brief for Administrators to help make the case
- Climate Action Plan template
- Funding Sources



**Sustainable  
Libraries  
Initiative**

SUSTAINABLE LIBRARIES INITIATIVE



# Sustainable Library Certification Program



**Sustainable  
Libraries  
Initiative**

<https://sustainablelibrariesinitiative.org/>

SCAN ME





# Sustainable Library Certification Program

## Public & Academic Libraries

- Organizational Commitment
- Energy, Land, and Water Use
- Waste, Recycling & Purchasing
- Partnerships
- Community Involvement
- Social Equity
- Community Resiliency
- Financial Sustainability
- Collections

SCAN ME



## School Librarians

- Partnerships & Community Involvement
- Leading Beyond the Library
- Social Equity & Resiliency
- Standards & Curriculum
- Collections



**Sustainable  
Libraries  
Initiative**

<https://sustainablelibrariesinitiative.org/>





# Sustainable Libraries Initiative

<https://sustainablelibrariesinitiative.org>



## Free

- Newsletter
- Mobile App
- Webinars
- Resources
- Facebook Page & Instagram

## FREE FOR PARTNER LIBRARY ASSOCIATION MEMBERS

- Curated Resources
- Access to On Demand Training
- CO<sub>2</sub> Calculator
- Vendor and Program Ideas
- American Library Association - SLI eCourse

**20% discount  
for  
Partner Library  
Association  
Members**

## Sustainable Library Certification Program

- Online Dashboard to Track Action Items
- Example policies, program ideas, and more
- Assigned Mentor
- Meet Ups with Others in the Program



**Sustainable  
Libraries  
Initiative**

## **Partner library association members new to the SLI receive one-free year of membership**

### **To opt-in:**

- Go to the Sustainable Libraries Initiative website:  
<https://www.sustainablelibrariesinitiative.org/SLI-Membership>
- Choose the membership type and fill out the membership form
- When you get to "How did you hear about us?" - select "Other" and enter your library association in the Notes Field to waive the membership fee.



Scan here  
to join!

**Partner Library Association members can also receive a 20% discount for the Sustainable Libraries Certification Program (SLCP).**

- Email [sliadmin@suffolknet.org](mailto:sliadmin@suffolknet.org) for information and details.

