

An Introduction to your membership in the

Sustainable Libraries Initiative

Presented by: Rebekkah Smith Aldrich, SLI Co-Founder & Advisory Board President
& Matthew Bollerman, SLI Co-Founder & Advisory Board Vice President





Maine Library
Association



NEW YORK LIBRARY ASSOCIATION
The Voice of the Library Community



A new opportunity...

- **Free 12-month SLI membership** for all partner association members
- **Discount** on the Sustainable Library Certification Program



Sustainable Libraries Initiative

Launched in 2015 as a **community of practice** for library leaders interested in addressing issues related to **climate change, community resilience and securing a vital, vibrant, and visible place** in the community/on campuses/in schools for **libraries**.



Sustainable
Libraries
Initiative



Image Source: National Centers for Environmental Information, NOAA

Sustainability = Core Value





**EVERY
JOB
IS A
CLIMATE
JOB**

**PROJECT
DRAWDOWN.**

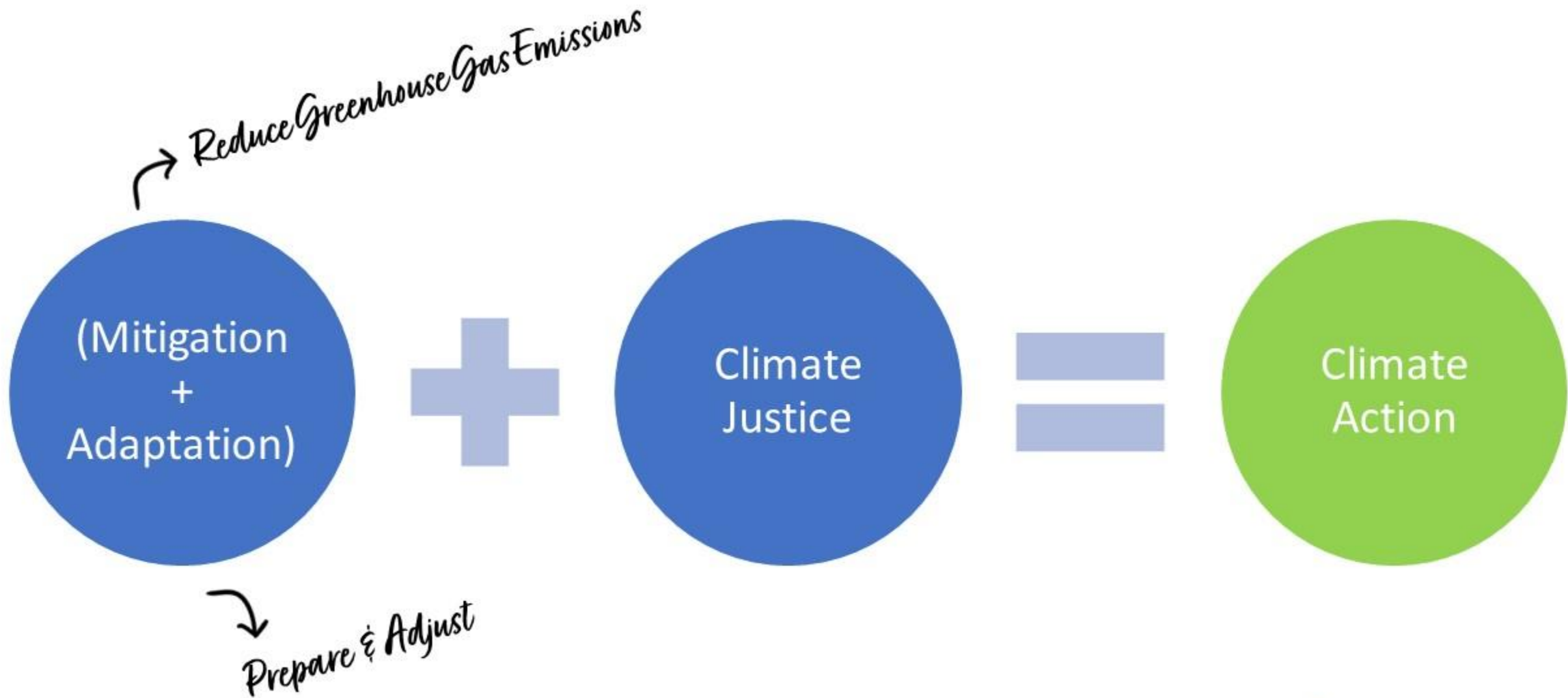


**Sustainable
Libraries
Initiative**

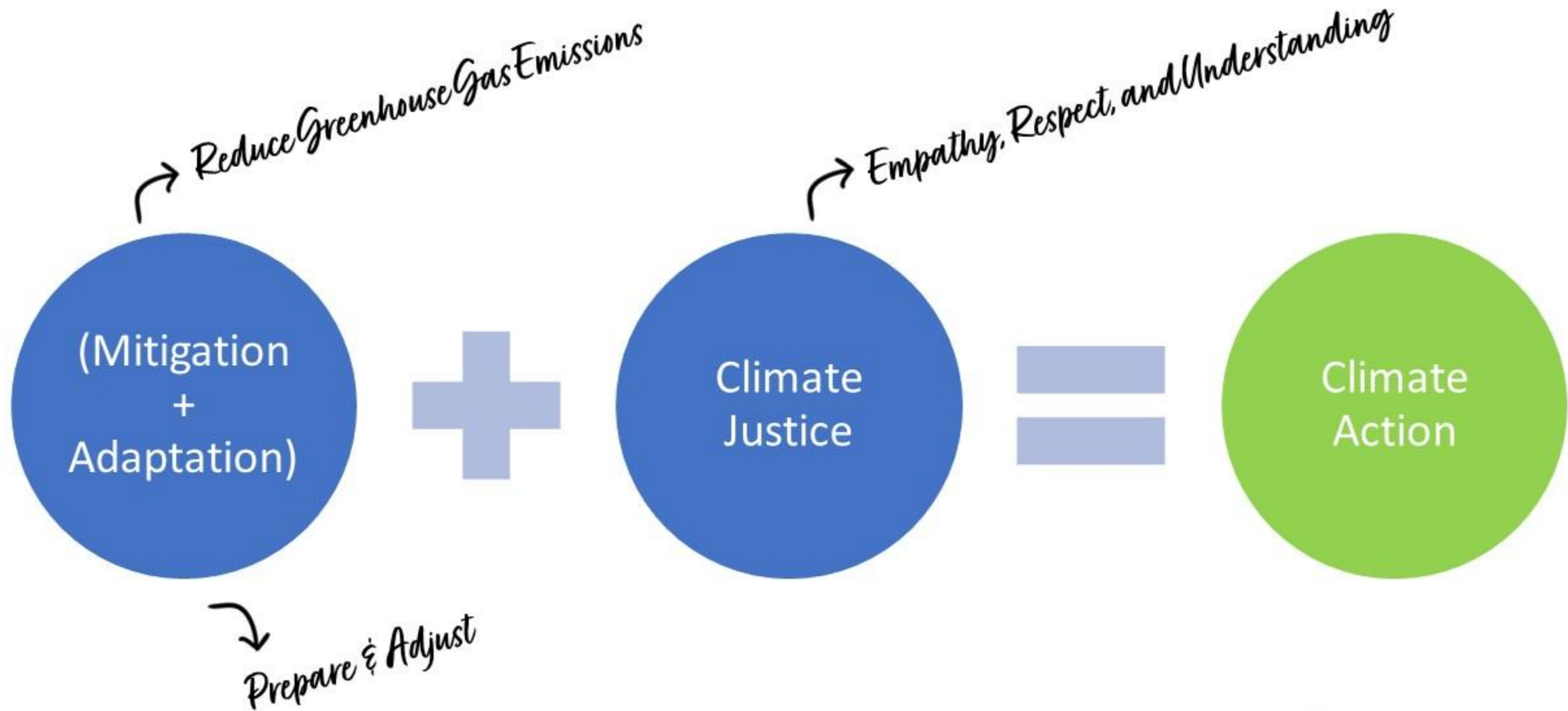
→ Reduce Greenhouse Gas Emissions



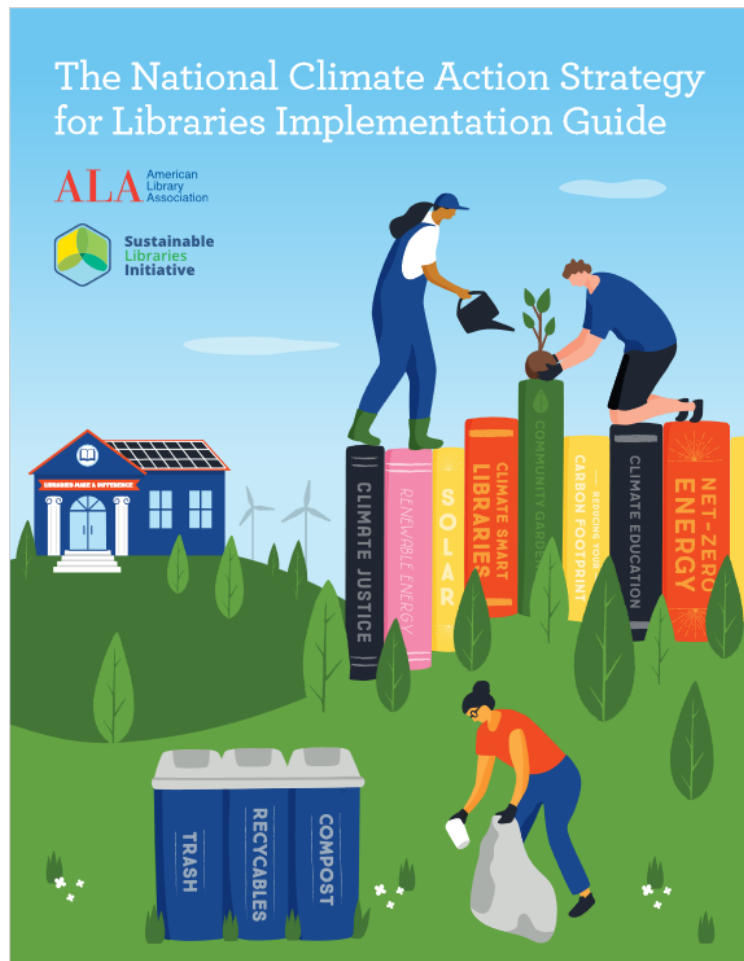
**Sustainable
Libraries
Initiative**



**Sustainable
Libraries
Initiative**



**Sustainable
Libraries
Initiative**



The Strategy

● Climate Change Mitigation

Libraries align greenhouse gas emission reduction goals with those that international climate scientists and policy makers have indicated are necessary to prevent catastrophic cascading effects. This strategy recommends a goal for all libraries to reduce their institution's greenhouse gas emissions by 43%, from 2015 levels, by 2030 and to achieve net-zero greenhouse gas emissions by 2050¹.

● Climate Change Adaptation & Contributions Community Resilience

Libraries adopt both internal disaster preparedness plans and strategic goals that speak to the most likely climate hazards facing their area to contribute to their community's resilience.

● Climate Justice Work

Libraries harness the transformative power of education for climate justice and develop relationships with local community organizations working on climate justice to embed a deeper awareness of the intersection of human and civil rights with climate stewardship than is presently found².

¹ Paris Agreement, United Nations, https://unfccc.int/sites/default/files/english_paris_agreement.pdf

² Principles of Climate Justice, Mary Robinson Foundation, <https://www.mrfcj.org/principles-of-climate-justice/harness-the-transformative-power-of-education-for-climate-stewardship/>



**Sustainable
Libraries
Initiative**

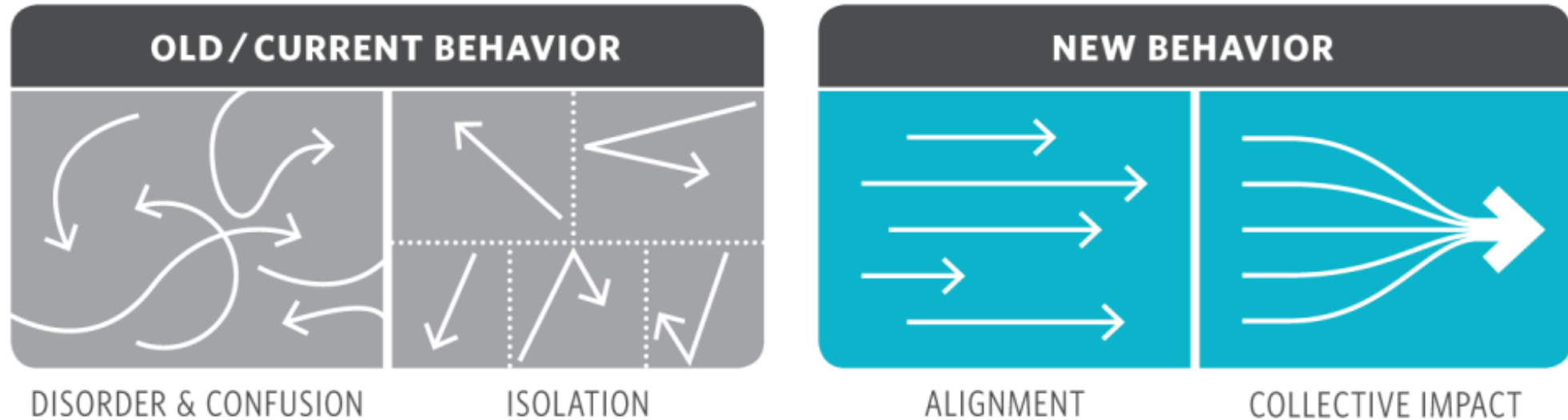
ALA American
Library
Association

National Climate Action Strategy for Libraries



CENTER FOR THE FUTURE OF LIBRARIES

ALA American Library Association



Graphic: AllHandsRaised.org

Sustainable Libraries

- ✓ **Strong & Authentic Institutions** that live their values out loud
- ✓ Catalyst for **Social Cohesion & Civic Participation** in Communities
- ✓ Working on **Climate Mitigation** (reducing Greenhouse Gas Emissions (GhG))
- ✓ Active Participants in **Climate Adaptation** (strengthening community resilience)



**Sustainable
Libraries
Initiative**

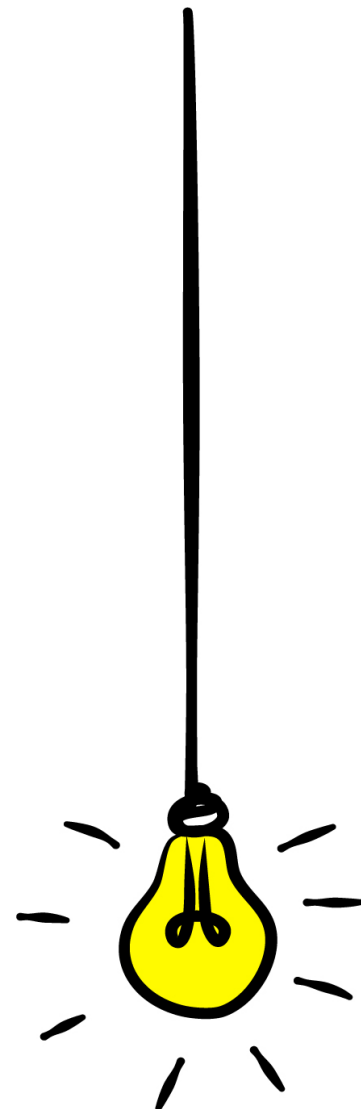
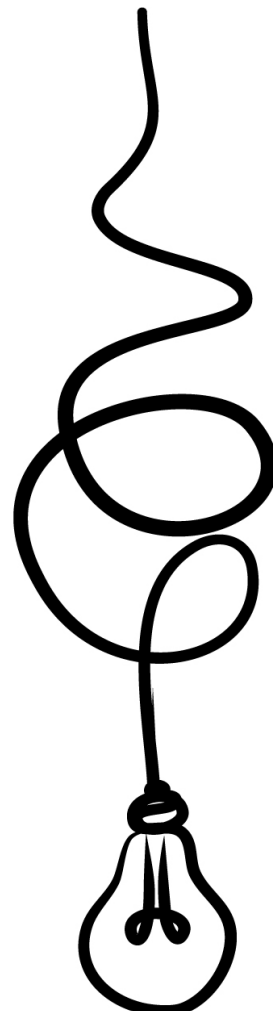
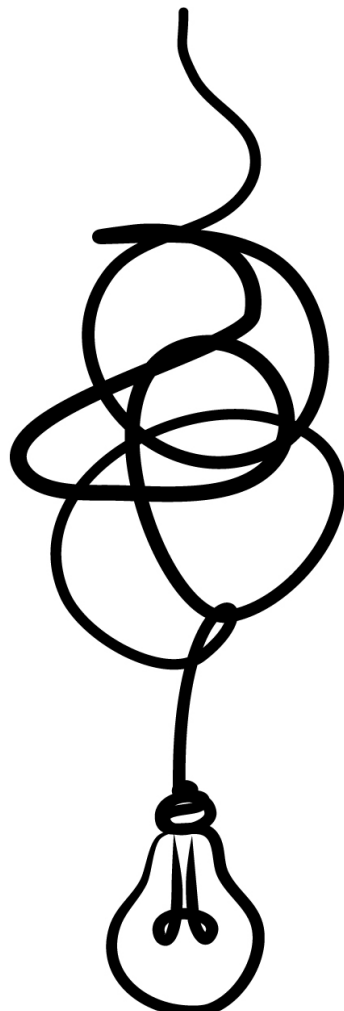
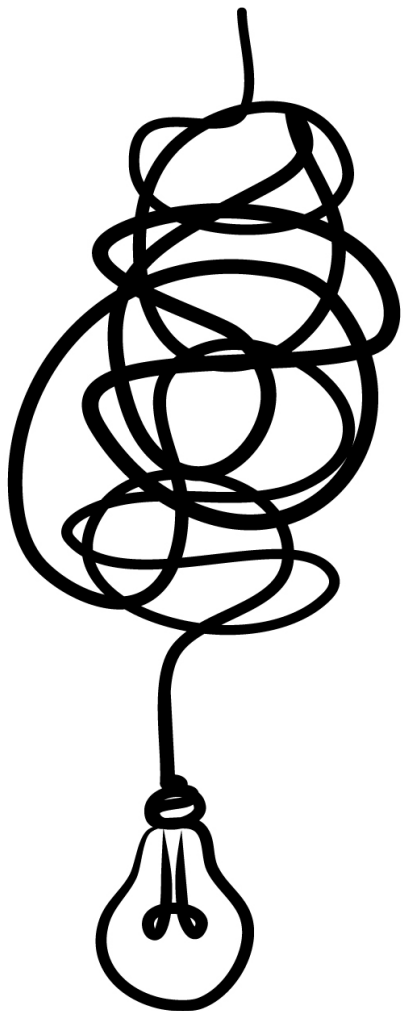
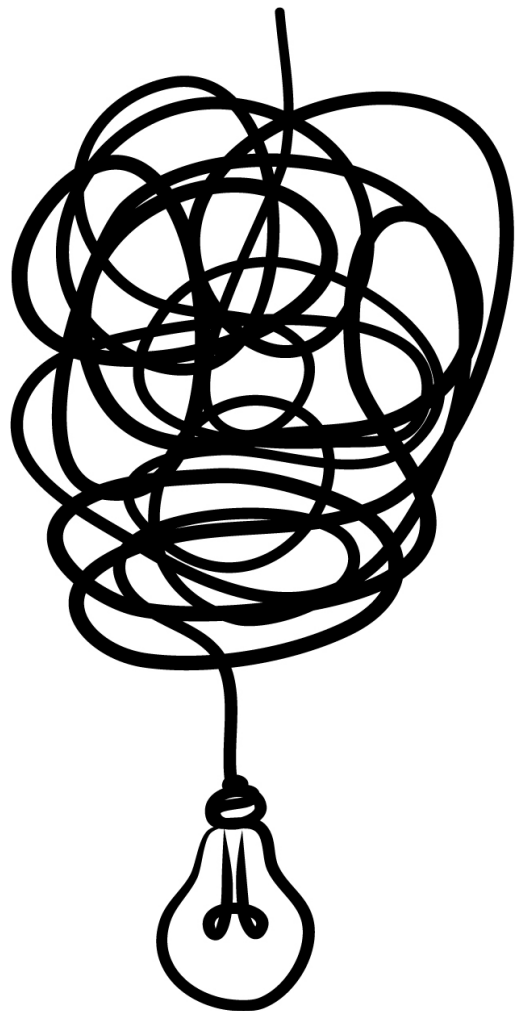
“You've got to think about **big things** while you're doing **small things**, so that all the small things **go in the right direction.**”

-Alvin Toffler , futurist



Triple Bottom Line Definition:

- Environmentally Sound
- Socially Equitable
- Economically Feasible



Proof of Concept



- **Field Tested with:**
 - Administrators
 - Library Boards
 - City Managers
 - Library Workers
 - Library Friends Group
 - Community Partnerships
- SLCP Current Enrollment:
160+ libraries across U.S., Canada, and Australia = “**real time laboratory**”

Benefits

Available upon claiming your free 12-month SLI Membership



Monthly Meet-ups

- Learn from experts and SLCP mentors
- Hear from your peers
- Get your questions answered
- Share your successes!



Upcoming Events

DEC 11 THU	Introduction to the Sustainable Libraries Initiative 2:00pm–3:00pm Webinars	DEC 12 FRI	Introduction to the Sustainable Library Certification Program (SLCP) 10:00am–11:00am Webinars	DEC 18 THU	Naturalist-in-Residence 2:00pm–3:00pm Webinars
JAN 8 THU	SLCP Meetup: Social Cohesion 1:00pm–2:00pm Meetups	JAN 22 THU	AI and the Environment 2:00pm–3:00pm Webinars	FEB 5 THU	SLCP Meet Up: Resilience Planning 1:00pm–2:00pm Meetups
MAR 5 THU	SLCP Meet Up: Financial Sustainability 1:00pm–2:00pm Meetups	MAR 18-19	Sustainable Futures Summit 2026 03/18/2026 @ 8:30am– 03/19/2026 @ 1:30pm Conference	MAR 20 FRI	International Day of Happiness All Day Celebrate!

Policy Examples

A.5: Sustainability Policy

A.6: Purchasing Policy

D.3: Library Travel Policy

D.5: No-Idling Policy

H.1: Partnership Policy

I.1: Commitment to Equity, Diversity and Inclusion

J.1: Commitment to Community Resiliency

L.1: Collection Development Policy

A.5: Sustainability Policy

Your library's Sustainability Policy will set the tone for decision making at all levels of your institution. Declaring that you will factor triple bottom line sustainability into your institution's decision making process will let all library stakeholders know that these considerations are fundamental to operations.

- [Comsewogue Public Library Environmental Sustainability Policy](#)
- [Kalamazoo Public Library Environmental Stewardship and Sustainability Policy](#)
- [Lindenhurst Memorial Library Sustainability Policy](#)
- [Mid-Hudson Library System Sustainability Policy](#)
- [Patchogue-Medford Library Sustainability Policy](#)
- [Plainedge Public Library Sustainability Policy](#)

A.6: Purchasing Policy

Products purchased for use in the library should factor in the environmental costs. These considerations could include the packaging, ingredients, and whether the item can be found from a local retailer or supplier. A purchasing policy should explicitly prioritize the best choice for environmental and social responsibility.

- [Palisades Free Library Environmental Policy](#)
- [Saratoga Springs Public Library Environmental Policy](#)
- [Palos Verdes Library District Sustainable Purchasing Policy](#)
- [Illinois Library Guide to Green Libraries: Purchasing](#)



**Sustainable
Libraries
Initiative**

Live & On Demand Training

- **Naturalist-in-Residence** – **coming up on December 18th!**
- Climate Adaptation for Library Facilities
- Libraries as Cooling Centers
- Monthly Sustainability Challenge for the Community
- Repair Cafes
- Workplace Wellness
- Beyond Lightbulbs and Solar Panels: Triple Bottom Line Sustainability
- Community Gardening
- Measuring Sustainability in Libraries



**Sustainable
Libraries
Initiative**

Custom CO₂ Calculator



Sustainable
Libraries
Initiative

[My dashboard](#)

[Log out](#)

[HOME](#)

[ABOUT US](#)

[PARTICIPATE](#)

[MEMBERS](#)

[EVENTS](#)

[NEWS](#)

[RESOURCES](#)

[CONTACT US](#)

[DONATE](#)

[View](#)

[History](#)

[Revisions](#)

Input Your Use	Emission Type	CO2 Emissions
Electricity		
<input type="text" value="0"/> <small>KWh</small>	Electricity	0.000 metric tons
Building Fuel		
<input type="text" value="0"/> <small>Gallons</small>	Fuel Oil	0.000 metric tons
<input type="text" value="0"/> <small>Therms</small>	Natural Gas	0.000 metric tons
<input type="text" value="0"/> <small>Gallons</small>	LP Gas	0.000 metric tons
Fleet Fuel		
<input type="text" value="0"/> <small>Gallons</small>	Gasoline	0.000 metric tons
<input type="text" value="0"/> <small>Gallons</small>	Diesel	0.000 metric tons
Business Travel		
<input type="text" value="0"/> <small>Miles</small>	Vehicle	0.000 metric tons
<input type="text" value="0"/> <small>Miles</small>	Bus	0.000 metric tons
<input type="text" value="0"/> <small>Miles</small>	Train	0.000 metric tons

Program Idea Bank

Bee Hotels

Bees may be some of the hardest workers, but so are Lindenhurst's Summer Camps Campers!

Audience: Teens

Program Type: Educational

[More Details](#)

Local Snacks, Global Issues

Ever heard that "April showers bring May flowers?" We're prepping for May flowers during these April showers. Join us inside for a little while longer to enjoy some local snacks and global films to inspire and activate your year. Together we can change the world.

Audience: Adults

Program Type: Educational

[More Details](#)

Big Tiny Art Show

The Big Tiny Art Show provided community groups and members of all ages as well as staff to create small paintings of any type of art of their choice. A community art exhibit was held at the culmination of the program featuring over 700 works from community members, groups, and staff.

Audience: Everyone

Program Type: Display

[More Details](#)

DIY Rainbarrels

Maximize the potential of rain water! Harvesting rainwater helps conserve water and protect our waterways from polluted runoff! Learn how to make your own Rainbarrels for your library to harvest rain water to further use throughout your landscape.

Audience: Adults

Program Type: Educational

[More Details](#)

Now We're Walkin'! Staff Challenge

Longwood Public Library staff walking challenge to promote health and wellness amongst staff. Complete with 8 different walking activities for staff to engage in including incentives in the form of a raffle.

Audience: Adults

Program Type: Passive

[More Details](#)

Clothing Swap

At the Shelter Island Public Library a group of local women have decided to keep clothes out of the landfill by holding monthly clothing swaps under the Library tent. They bring the clothes and the Library provides tables, storage space when possible and access to a bathroom and water.

Audience: Everyone

Program Type: Passive

[More Details](#)

No Mow May

Promoting healthy environments for pollinators by allowing grass to grow long. By not mowing a small patch of our lawn for the month of May, the Library is taking a small step towards creating a more abundant and diverse habitat for our pollinators.

Audience: Everyone

Program Type: Passive

[More Details](#)

DIY Emergency Kit

Wish you were confident in your ability to thrive in an emergency? Make sure you're not the person searching for that flashlight you were sure you thought you had.

Audience: Adults

Program Type: Educational

[More Details](#)

Vendor List



[Log out](#)

DONATE

≡ Filters

100% (n = 100)

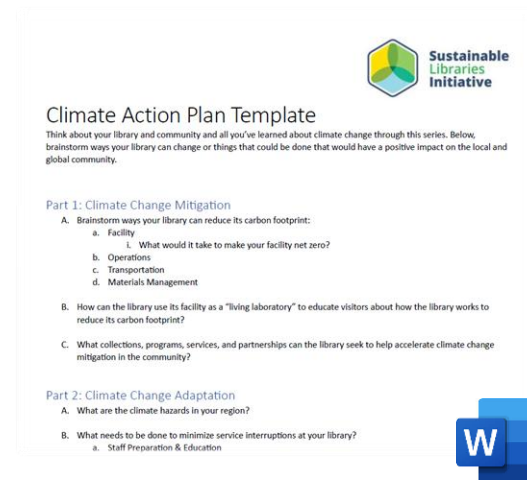
-

Lamps and Light Bulbs Browse our website for fluorescent lamp recycling kits to get the sizing you need. If you own a business, you know how important it is to maintain a safe, healthy environment for your employees and your customers. At American Lamp Recycling,

Climate **Action** Lab



- Identify **your region's** climate hazards
- Climate Resilience Brief for Administrators to help **make the case**
- Climate Action Plan **template**
- **Funding** Sources



SUSTAINABLE LIBRARIES INITIATIVE



Sustainable Library Certification Program



**Sustainable
Libraries
Initiative**

<https://sustainablelibrariesinitiative.org/>

SCAN ME





Sustainable Library Certification Program

Public & Academic Libraries

- Organizational Commitment
- Energy, Land, and Water Use
- Waste, Recycling & Purchasing
- Partnerships
- Community Involvement
- Social Equity
- Community Resiliency
- Financial Sustainability
- Collections

SCAN ME



School Librarians

- Partnerships & Community Involvement
- Leading Beyond the Library
- Social Equity & Resiliency
- Standards & Curriculum
- Collections



**Sustainable
Libraries
Initiative**

<https://sustainablelibrariesinitiative.org/>

Looking for Inspiration?

Check out the SLCP Final Presentations!



THRIVING RESILIENT SUSTAINABLE

SEPT 16, 2025

PRESENTED TO
SLI ADVISORY BOARD

PRESENTED BY
JENNIFER WILSON
AND KELLY LAU





Sustainable Libraries Initiative

<https://sustainablelibrariesinitiative.org>



**20% discount
for Association
Partner
Members**

Free

- Newsletter
- Mobile App
- Webinars
- Resources
- Facebook Page & Instagram

FREE for Association Partner Members

- Access to On Demand Training
- Sample Policies
- CO₂ Calculator
- Vendor Database
- Program Ideas
- Climate Action Lab
- Curated Resources

Sustainable Library Certification Program

- Online Dashboard to Track Action Items
- Example policies, program ideas, and more
- Assigned Mentor
- Meet Ups with Others in the Program



**Sustainable
Libraries
Initiative**

Partner library association members new to the SLI receive one-free year of membership

To opt-in:

- Go to the Sustainable Libraries Initiative website:
<https://www.sustainablelibrariesinitiative.org/SLI-Membership>
- Choose the membership type and fill out the membership form
- When you get to "How did you hear about us?" - select "Other" and enter your library association in the Notes Field to waive the membership fee.



Scan here
to join!

Partner Library Association members can also receive a 20% discount for the Sustainable Libraries Certification Program (SLCP).

- Email sliadmin@suffolknet.org for information and details.

