

MAPLEWOOD
LIBRARY
OPEN FOR ALL

Maplewood Memorial Library



Sustainable Libraries Initiative Certification Presentation



**Sustainable
Libraries
Initiative**

Table of Contents



photo by Chuck Choi



1. Title page
2. Table of Contents
3. About Maplewood Library
4. Mission and Strategic Initiatives
5. Sustainable Maplewood
6. Sustainability Policy
- 7-8. Energy
9. Indoor Spaces
10. Outdoor Spaces
11. Water
12. Transportation
13. Material Management
14. Social Cohesion
15. Collective Impact
- 16-17. Resilience Planning
- 18-19. Financial
20. Collection
21. First Generation Sustainability Committee
22. Future Sustainability Goals



About the Maplewood Library

Maplewood Memorial Library is located in Essex County, in Northern New Jersey. The population of Maplewood is 25,406, of whom 14,904 have a library card.

The Library consists of two buildings: our Main Library and our Hilton Branch. The Main Library was recently renovated and expanded, and has earned LEED Gold certification, the first public library in New Jersey to do so.

Our Mission and Strategic Initiatives

We connect people to information, ideas, culture—and each other. We are open to all.

- We strengthen community
- We nourish the mind
- We encourage growth
- We move forward


The Maplewood Memorial Library adheres to the principles of the American Library Association Library Bill of Rights and Freedom to Read statements.



Sustainable Maplewood

- Green Purchasing Policy adopted by resolution in May 2022
- Sustainable Land Use Pledge adopted by resolution in April 2022
- Green Building Practices for Civic, Commercial and Residential Buildings adopted by resolution in April 2022
- The Township of Maplewood received a Silver Certification from Sustainable New Jersey in October 2023
- Maplewood Energy Plan adopted in April 2024

TOWNSHIP OF MAPLEWOOD



RESOLUTION NO. 156-22

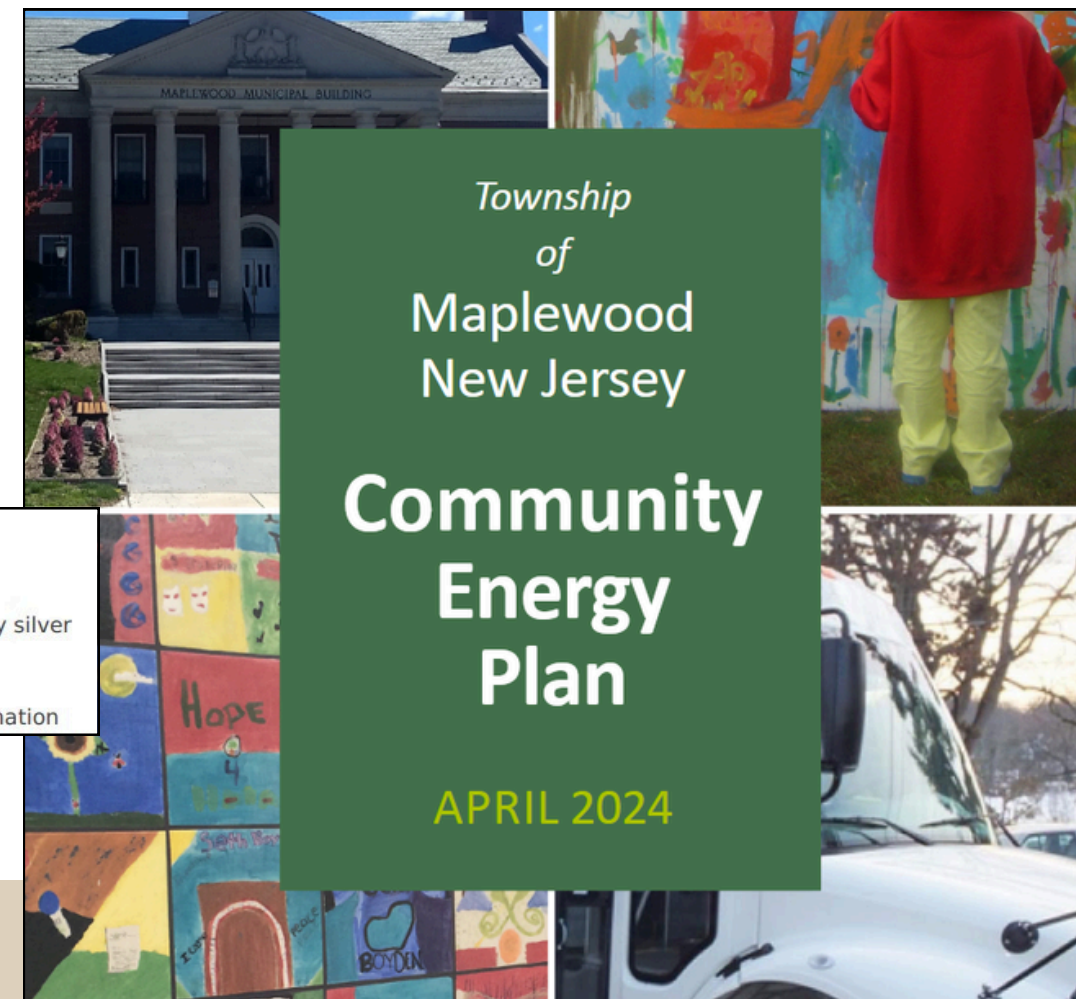
**RESOLUTION
ADOPTING THE GREEN PURCHASING POLICY
IN THE TOWNSHIP OF MAPLEWOOD**



Sustainable Jersey Certification Report

This is the Sustainable Jersey Certification Report of Maplewood Twp, a Sustainable Jersey silver certified applicant.

Maplewood Twp was certified on October 03, 2023 with 555 points. Listed below is information



Township
of
Maplewood
New Jersey

**Community
Energy
Plan**

APRIL 2024

Sustainability Policy

Strategic Initiative:

Create a transformative, smart and sustainable space for our community.

Maplewood Memorial Library is the center of its resilient and sustainable community. In 2023, the Library joined the Sustainable Libraries Initiative (SLI) through the New Jersey Library Association. The SLI provides libraries with a step-by-step process to implement sustainable decisions that are guided by the Triple Bottom Line philosophy for sustainability: they are environmentally sound, socially equitable, and economically feasible.

Employee knowledge and involvement are essential to the implementation of this policy. The Library Board of Trustees and Administration encourage staff to be proactive and apply sustainable thinking in all areas of work, both inside and outside its buildings. All employees will receive a copy of this policy and any training necessary to participate in the Library's sustainability efforts. By participating in this program, the Library demonstrates its commitment to sustainability through its policies, practices and partnerships. We aim to create partnerships, policies and procedures which make our community resilient and strong.

[The full Sustainability Policy](#)

Our 2026 Sustainability Fair



Energy

On-Site Renewable Energy Sources

- The Main Library's new roof has solar panels and 2 sections of green roof.
- Fifty-eight percent of the electricity is offset by the photovoltaics

Task Lighting

The majority of staff use laptops and have task lighting at their workstations.

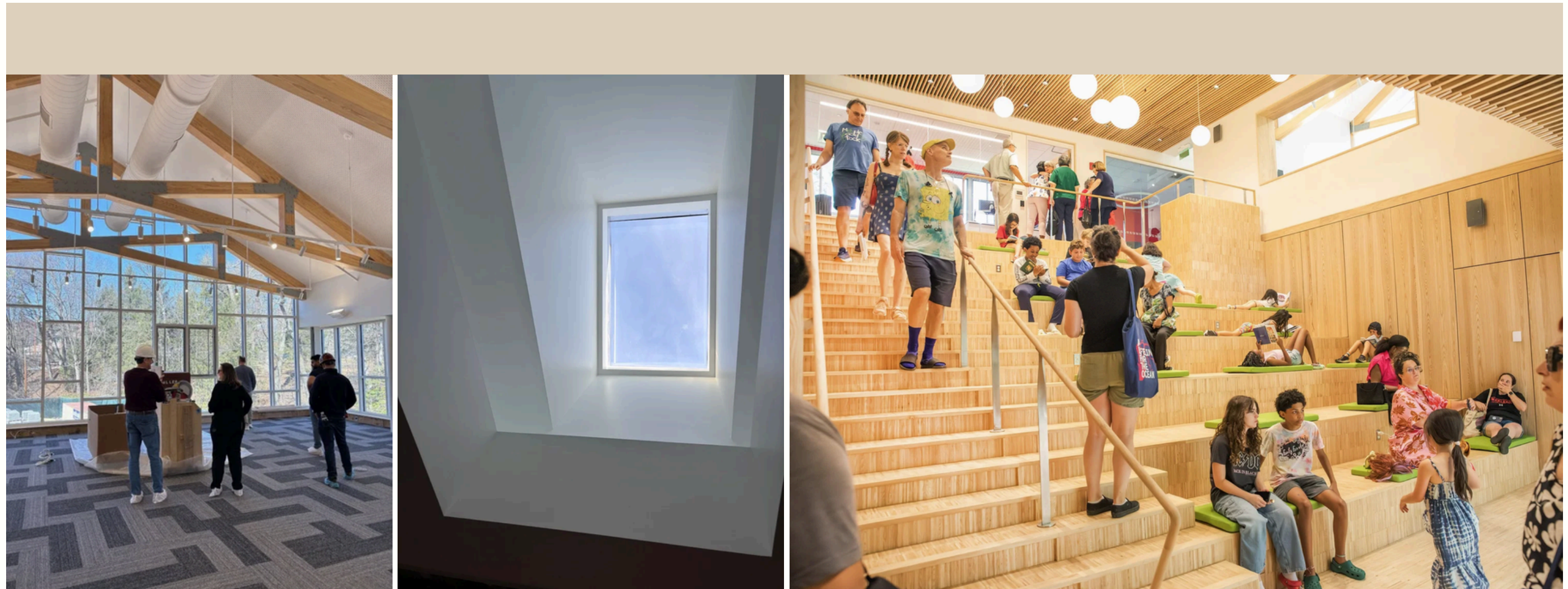
Upgrade Lighting

When funds are available, outdated fixtures at the Hilton Branch will be replaced with fixtures that use energy-efficient T8 or T5 lamps with electronic ballasts.



Indoor Spaces

- Air quality:
 - CO2, temperature, and humidity sensors and Indoor Air Quality Detectors
 - Safer choice cleaning products
 - Smoking is prohibited in buildings and surrounding parks
 - Operable windows at both locations
- Natural light is abundant at both locations
- Healthy food
 - Maplewood Farmers Market behind Hilton Branch, runs May-Nov



Outdoor Spaces

- Landscaping
 - Native plantings at both locations
- Storm water management:
 - Green roofs
 - Permeable walkways (brick patios)
 - Storm drainage system
 - Alarmed backflow valve
 - Duplex sump pump
 - Vents and louvers above flood elevations
 - Basement concrete pressure slab and waterproofing
 - Grading to divert water away from the building
-
- At Hilton Branch:
 - Rain garden (largest in New Jersey)
- Lighting:
 - Exterior lighting on a timer at both locations
 - Main: photocell
 - Hilton: Lights are LED and pointed down



Water



Main Floor: Jan '25 to 'Feb 26



Water-efficient devices

Low flow fixtures: newer ones are on the WaterSense labeled products list.



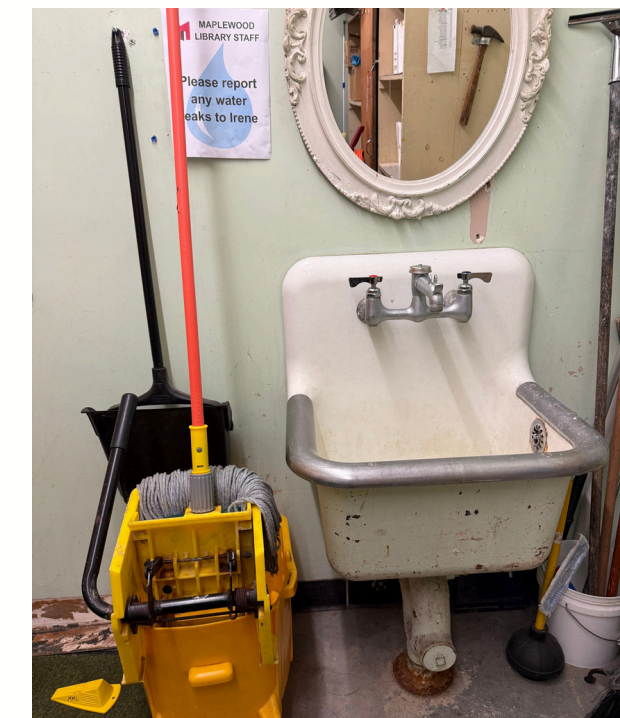
Leak Detection Plan

Signs have been installed in all areas with sinks and/or toilets advising staff to inform the manager of any leaks.



Proper Water Disposal

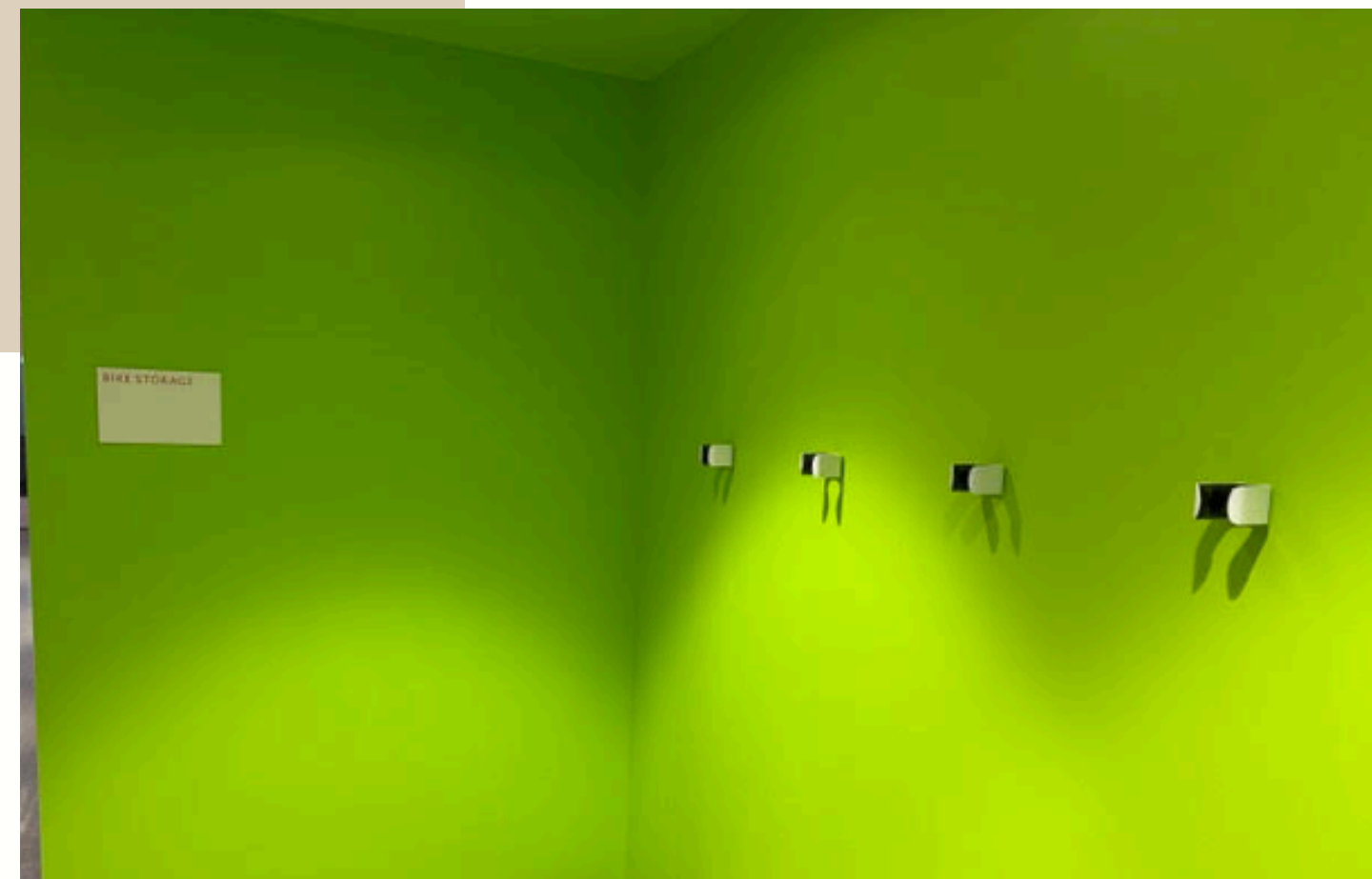
All mop water is disposed of in a slop sink





Transportation

- Bicycle racks
 - Indoor bike storage area for staff at Main Library
 - Outdoor bicycle racks are provided at both buildings
- EV charging stations are available at both library buildings
- Public Transit
 - Maplewood Train Station is a short walk from the Main Library
 - Hilton Branch is served by 3 NJ Transit bus routes
- Staff are encouraged to attend meetings virtually when possible
- Carpooling is encouraged for in-person meetings & conferences
- New Jersey and Maplewood maintain an anti-idling policy



Material Management

Supplies

- Google Forms are used to centralize purchasing
- Scrap paper is reused for in-house printing
- Environmentally friendly supplies are purchased as feasible.

No bottled water

Staff members bring their own refillable bottles and mugs for both cold and hot beverages.

Craft/outreach programs

Reusable, upcycled or recycled materials are used for programs and outreach events whenever possible.





Members of Maplewood Library's Board of Trustees



Social Cohesion

Programs development based on community aspirations

Programs included:

- Free tutoring at the Library through a partnership with the local Education Foundation
- ESL classes provided with a grant from the NJ Dept. of Labor
- A free LGBTQ+ Health Fair hosted by the Library during LGBTQ+ History Month

NORTH JERSEY LGBTQ+ HEALTH FAIR 2025

The North Jersey LGBTQ+ Health Fair is presented by NJCRI Pride Center & Project TEA hosted by Maplewood Memorial Library as part of October LGBTQ+ History Month Events.

RESOURCES & SERVICES

- FREE TESTING AND WELLNESS CHECKS**
Rapid confidential HIV testing, STI testing including other testing, Health screening and prevention services, vaccinations. Resources and holistic health, behavioral health, county services, locally, statewide care support and more additional onsite.
- GET CONNECTED SUPPORT, RESOURCES**
Onsite support and resources with healthcare providers, agencies, and organizations across North Jersey and beyond.

FREE. OPEN TO ALL
OCTOBER 11TH 10AM-2PM
51 BAKER STREET, MAPLEWOOD, NJ

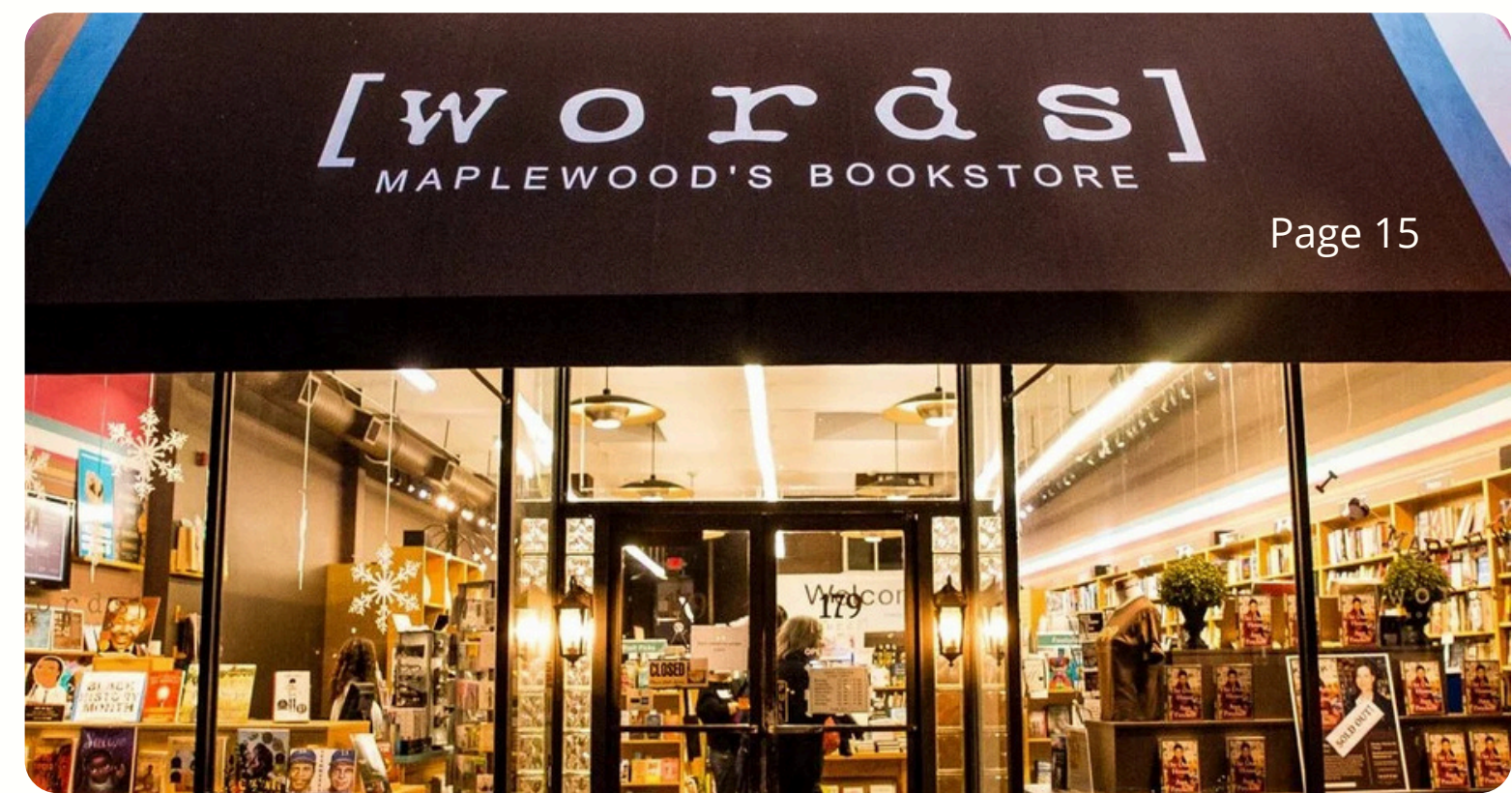
Programs Celebrating Diversity

Programs included:

- Local artist Manman Huang did Ink Painting Workshops for adults and children.
- For AAPI Month, Seema Moondra, of Enjoy Explore India, did a demo and tasting of Indian Chutneys.
- Michelle Miller, host of CBS Saturday Morning and author of *Belonging: A Daughter's Search for Identity Through Loss and Love*.



Collective Impact



Non-profit Partnerships

North Jersey Pride, Inc., is a 501(c)3 nonprofit that produces events and activities to promote inclusivity and equality. The Library participates yearly in Pride Fest which takes place in Maplewood.

Hold a voter registration program

The League of Women Voters partnered with us for a registration event on National Voter Registration Day in 2024 and 2025. We do this yearly at the Main Library or Hilton Branch.

We also partnered with the Hilton Neighborhood Association to hold a registration drive on NVRD at DeHart Park.

For-profit Partnerships

The Library partners with [words], our local independent book store. When we have author talks they come to our venue and sell the author's books.



Resiliency Planning

Our Sustainability Policy contains a commitment to community sustainability through partnerships with the Township, performers, presenters, and agencies.

- We completed a Pocket Disaster Response Plan in 2022 and revise it yearly.
- The Library produced a self-guided Green Education Tour of the LEED Gold-certified Main Library.
- After Hurricane Ida flooded our lower level, plans for our new building were redrawn to raise all mechanicals to the roof.
- SLI Committee members attended Essex County disaster planning meetings
- The Main Library has equipment ready to hook up to the Town's portable generator, should the need arise.

Region Specific Environmental Programming

- Sorting it Out: Making the Most of Your Recycling Efforts, presented by Catherine Redd of Somacycle.
- Caring for Our Community Cats presented by CPAW (Communities Promoting Animal Welfare NJ).
- Electrify SOMA presented by the Maplewood and South Orange Environmental Committees



Resiliency Planning

First responders engagement event

The Hilton Branch hosted a Touch-A-Truck event for the community. Police, Fire, and the Department of Public Works brought vehicles to our parking lot. Kids were allowed to sit in the vehicles, spray the fire hose, and turn on the sirens! First Responders explained how the vehicle's apparatuses help with their work.

Resiliency Planning reflected in a collection

Our website's [Reader's Place](#) and our book displays reflect a range of topics to appeal to our diverse reading community. Often times, they will highlight a recognition month or day.

Our collection includes materials on climate change, resiliency, sustainability, and disaster preparedness.



Readers Place

Topical Reading Lists 2025

- Transgender Day of Visibility
- Hispanic Heritage Month
- Pride Month
- Asian American / Pacific Islander Month
- Banned Books Week
- Black History Month

Financial Sustainability

All libraries in New Jersey are funded by at least "one-third mill" which is a state law in New Jersey that requires municipalities to fund their public libraries with a minimum of \$0.333 (one-third of a mill) for every \$1,000 of assessed property value. The Township of Maplewood typically funds the Library by more than the one-third mill.

Maplewood Library, like all New Jersey municipal libraries, must abide by NJSA 40:54-15, which states that excess funds, except those restricted for capital projects, bequests, or donations cited in the annual report, must be returned to the municipality.

SAMUEL KLEIN AND COMPANY, LLP
CERTIFIED PUBLIC ACCOUNTANTS

550 BROAD STREET, 11TH FLOOR
NEWARK, N.J. 07102-9989
PHONE (973) 624-6100
FAX (973) 624-6101

38 WEST MAIN STREET, SUITE 303
FRESHFIELD, N.J. 07728-2201
PHONE (732) 780-2600
FAX (732) 780-1000

INDEPENDENT AUDITOR'S REPORT

President and Members of the Board of Trustees
Maplewood Memorial Library
Township of Maplewood
Maplewood, New Jersey 07040

Report on the Audit of the Financial Statements

Qualified Opinion Maplewood Memorial Library has annual audits conducted by Samuel Klein and Company.

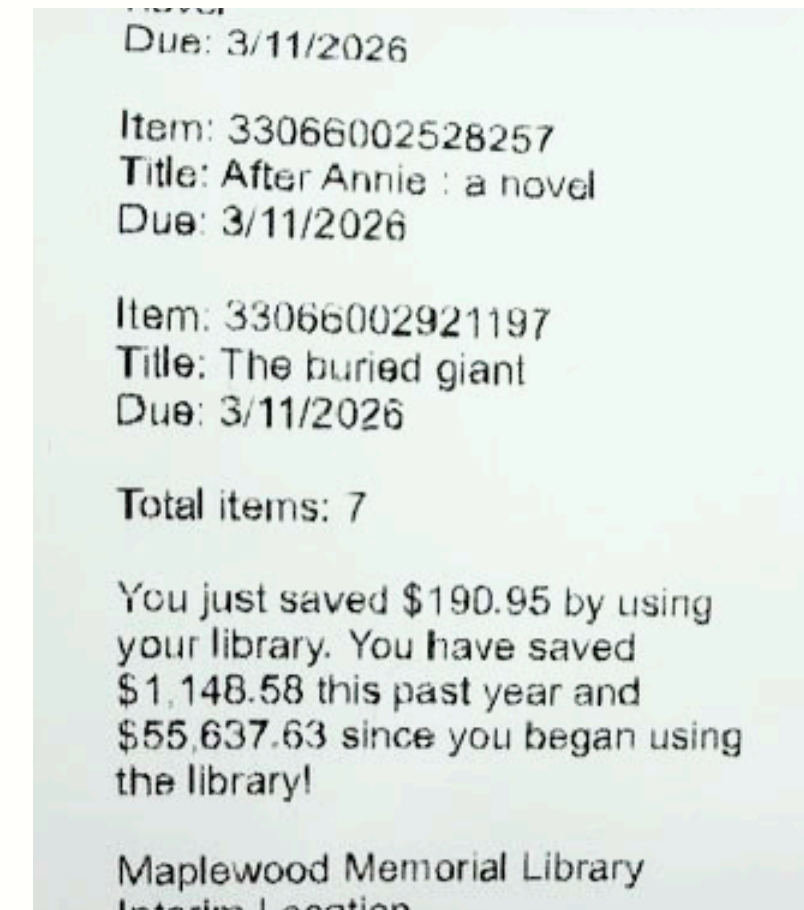


Financial Stability

Maplewood Memorial Library patrons' checkout receipts show their Return on Investment by adding up the equivalent dollar amount to the books they borrowed vs .the cost of purchasing the same books.

Full-time Maplewood Memorial Library employees are eligible for Health Benefits through the Township of Maplewood.

Full-time Maplewood Memorial Library employees are eligible to participate in the New Jersey State Public Employees Retirement System (PERS). Employees who do not work the minimum hours to enroll in PERS, may enroll in the Defined Contribution Retirement Program (DCRP).





The Maplewood Library offers homebound services free of charge to resident cardholders who are temporarily or permanently unable to travel to the Library.



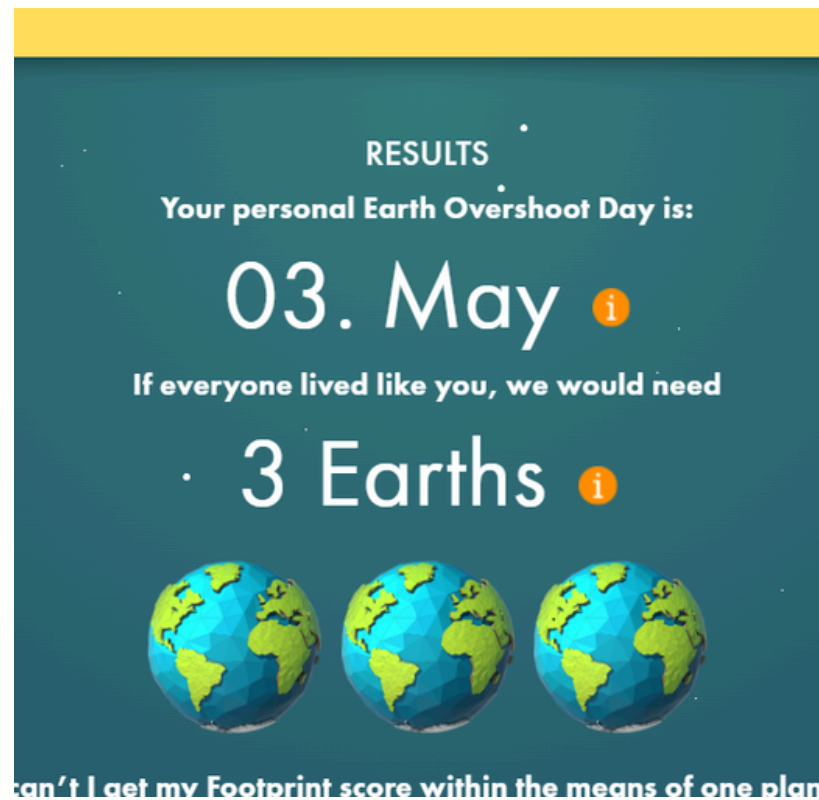
Collections

Inclusive Services

The Maplewood Library policies and statements support and guide our commitment to equity, diversity and inclusion. Our Collection Development policy adheres to ALA's Library Bill of Rights and shows the value we place on diverse and inclusive collections.

Better Use of Space

All program spaces - our Community Room, Create Space and Children's Program Room are designed to be flexible and allow for growth. The Community Room and Children's Program Room feature folding tables on castors and stackable, uniform chairs.



SLI Event Attendance

Every member of the First Gen. committee attended at least one SLI webinar, with most of the committee attending multiple webinars.



Determining Your Carbon Footprint

Calculating our own ecological footprint helped us understand our personal impact on Earth and helped guide our decisions.



Cultural Competency Training for staff

All staff members were required to complete the webinars on Cultural Competency, DEI, and Understanding Implicit Bias.



First Generation Sustainability Committee



l. to r. Ayoola White, Kathy Goldfine, Joanne Beckerich, Irene Langlois, Sarah Lester, Jennifer Jacoppo

FUTURE SUSTAINABILITY GOALS

- **Continue with the Sustainable Maplewood Committee**
- **Increase green purchasing as budget allows**
- **Continue to educate staff and patrons about sustainability**
- **Build more community partnerships and plan more sustainability programming**
- **Continue to prepare for an increasingly changing climate**



THANK YOU

Contact info: Sarah Lester, Director
lester@maplewoodlibrary.org

maplewoodlibrary.org

photo by Chuck Choi