



THE SUSTAINABLE TRANSFORMATION OF THE

WEST MIDDLE SCHOOL LIBRARY MEDIA CENTER



WEST MIDDLE SCHOOL, BRENTWOOD, NY
TARA LALLBACHAN
SCHOOL LIBRARY MEDIA SPECIALIST



WEST MIDDLE SCHOOL: OUR FOUNDATION

- **Brentwood UFSD is the largest suburban School District in New York State**

- **West Middle School serves a diverse population of 925 students comprised of:**

- **82% Latino/Hispanic students**
- **32% English Language Learners**
- **21% Students With Disabilities**
- **89% Economically Disadvantaged**



WEST MIDDLE SCHOOL LMC: OUR MISSION

"The West Middle School Library is committed to providing equitable access to information, fostering critical thinking, and inspiring creativity through innovative programs and resources, thereby contributing to the development of well-rounded individuals prepared for a diverse and interconnected world."

Core Values

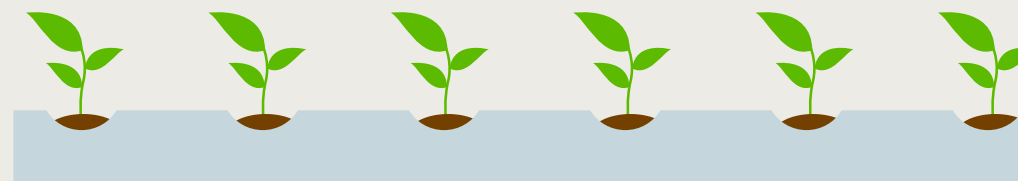
**Innovation – Equity – Literacy
Collaboration – Sustainability**



GROWING SUSTAINABILITY AT THE WMS LIBRARY

Introducing our
Aeroponic Vertical Tower
Garden Program!

**Action Item A.2.:
Create a Program**



GROWING SUSTAINABILITY AT THE WMS LIBRARY



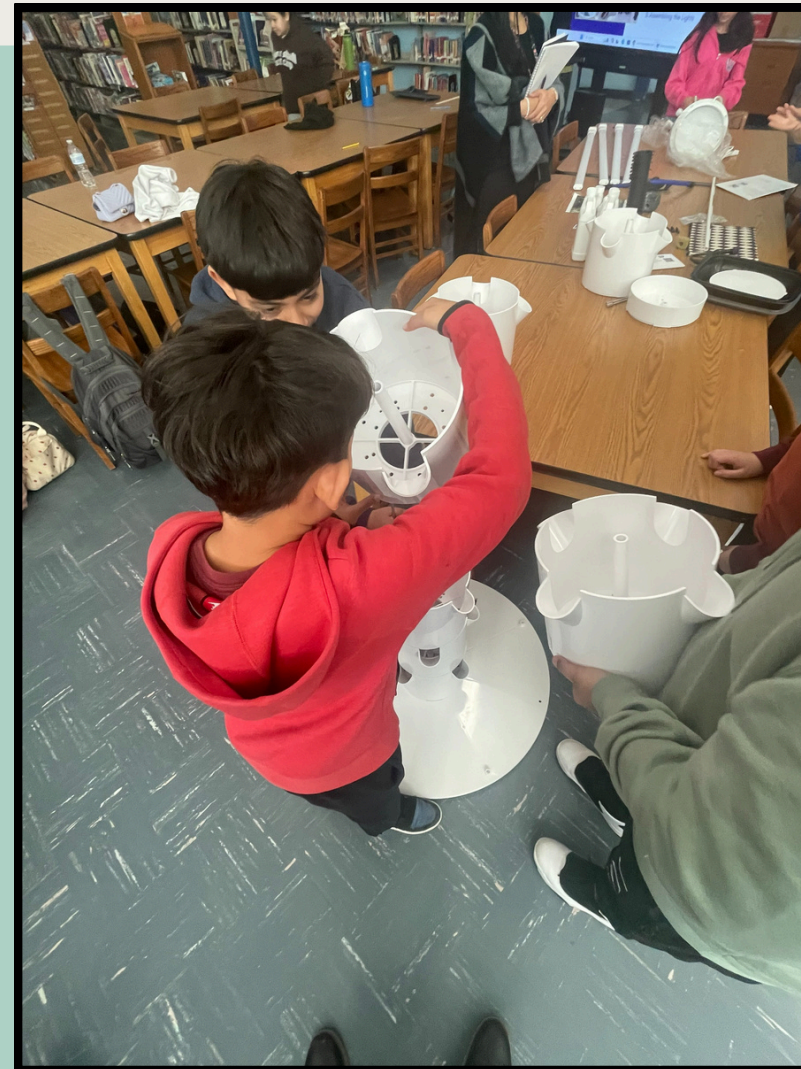
INTRODUCING OUR NEW AEROPONIC VERTICAL TOWER GARDEN PROGRAM!

- **Program Goal:** To engage students in learning about and acting on sustainable practices.
- **Generously funded by** Northwell Health, PlantUp, and the Brentwood UFSD.
- **The WMS LMC** took the lead in embracing this opportunity for the Sustainable Libraries Initiative.

GROWING SUSTAINABILITY AT THE WMS LIBRARY



GROWING SUSTAINABILITY AT THE WMS LIBRARY



THE NEED FOR DIVERSE VOICES



Action Item B.1: Curated Collection

**“STUDENT FEEDBACK INDICATED A DESIRE
FOR MORE INCLUSIVE AND RELEVANT
MATERIALS.”**

*Our initial assessment highlighted areas where
our collection did not fully reflect the rich
diversity of our student body, signaling a need
for intentional change.*

Diversity Audit

To gain a more comprehensive
understanding of the diversity within our
collection, we are committed to
conducting regular diversity audits.
This involves a more in-depth and
systematic review of our holdings,
focusing specifically on representation
across various dimensions of diversity.

CULTIVATING AN INCLUSIVE COLLECTION



- **Student-Centered Development:** Actively seeking student input through suggestions and book clubs.
- **Multiple Formats:** Expanding audiobooks, ebooks, and accessible digital resources.
- **Thematic Displays:** Regularly featuring diverse authors, characters, and topics.
- **Educator Collaboration:** Partnering with teachers to identify curriculum-aligned diverse materials.





SEEING THE DIFFERENCE



Titlewave Collection Analysis of Diverse Titles (May 2025):

Diverse titles in collection

8,349

Percent of collection

32%



LEADING AND LEARNING WITH LISLA



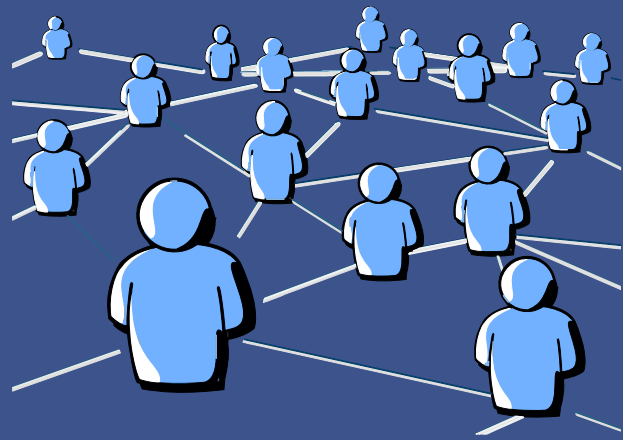
**Action Item C.4.:
Professional Organizations**

LISLA: The Long Island School Library Association

**Serving as Treasurer on the
LISLA Executive Board:**

- **Contributing to financial management, strategic planning, and advocacy of school libraries**
- **Networking and collaboration with school librarians across Nassau & Suffolk counties on Long Island**





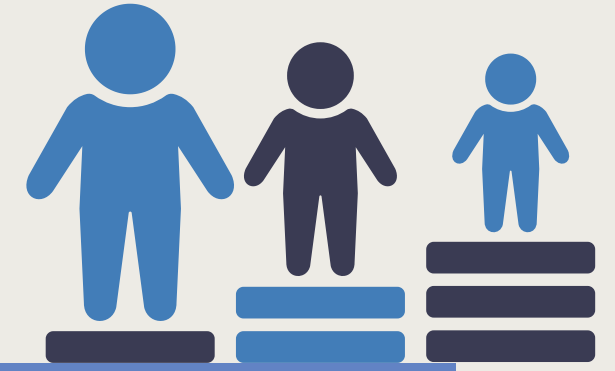
BUILDING CONNECTIONS



- **Weekly meetings with the building principal for alignment and support.**
- **Active participation in the Brentwood UFSD Curriculum Advisory Council.**
- **Attendance at Brentwood UFSD BOE meetings for advocacy.**
- **Leadership as Treasurer for the Long Island School Library Association (LISLA).**
- **Community outreach through hosting family nights in the library and working exhibits for school community events (Wellness Fair, Career Expo, BookFest, etc.)**



THE TRANSFORMATION: BENEFITS FOR OUR COMMUNITY



- **Students:** Increased sense of belonging, enhanced access, development of critical thinking and empathy, greater engagement and curiosity, empowerment as lifelong learners.
- **Staff:** Access to more relevant and diverse resources, enhanced collaboration opportunities, increased awareness of equitable practices.
- **Community:** A more vibrant and inclusive library space, increased opportunities for family engagement, stronger connections with community organizations.



LOOKING AHEAD: A SUSTAINABLE FUTURE

- **Commitment to the principles of the Sustainable Libraries Initiative.**
- **Future goals include: embracing new technologies, ensuring equal access to information and resources, foster strong partnerships, and encouraging responsible use of resources and environmental awareness.**
- **Our gratitude goes to the SLI Advisory Board for providing this tremendous ongoing opportunity that will continue to make a profound difference our school, the library media center, and most importantly-- our students.**



**THANK YOU FOR VIEWING
THE SUSTAINABLE TRANSFORMATION OF THE
WEST MIDDLE SCHOOL
LIBRARY MEDIA CENTER**

**QUESTIONS?
TARA LALLBACHAN
SCHOOL LIBRARY MEDIA SPECIALIST
tara.lallbachan@bufsd.org
(631) 434 - 2741**

